

# UF HEALTH SHANDS HOSPITAL – FIRST FLOOR

## How to use this map:

Each path is identified by its own color and letter. The letter may be seen spaced along each path:



Each destination has a number. Find where you want to go by looking up the name on the directory list. Next to it, is its number and its path color. Look for that number along the colored path on the map to see where to go.

If you need help, go to any information desk marked on the map by this symbol:



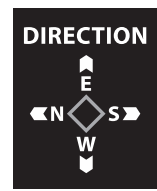
**NOTE:**

Main Atrium Elevators do not go to the floors 8, 9, 10 and 11.

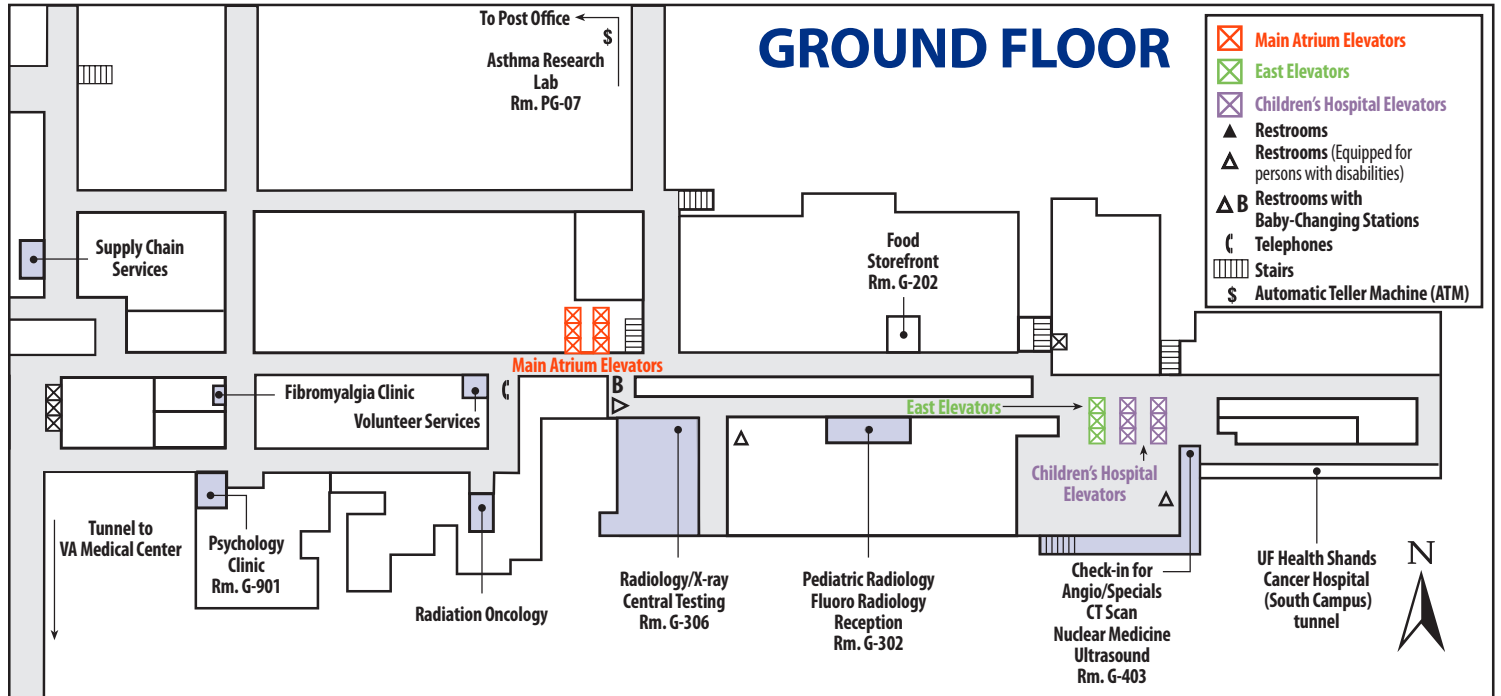
Please use the East Elevators for floor 11.

Please use the Children's Hospital Elevators for the 10th floor.

**TO: UF Health Medical Plaza**



# UF HEALTH SHANDS HOSPITAL



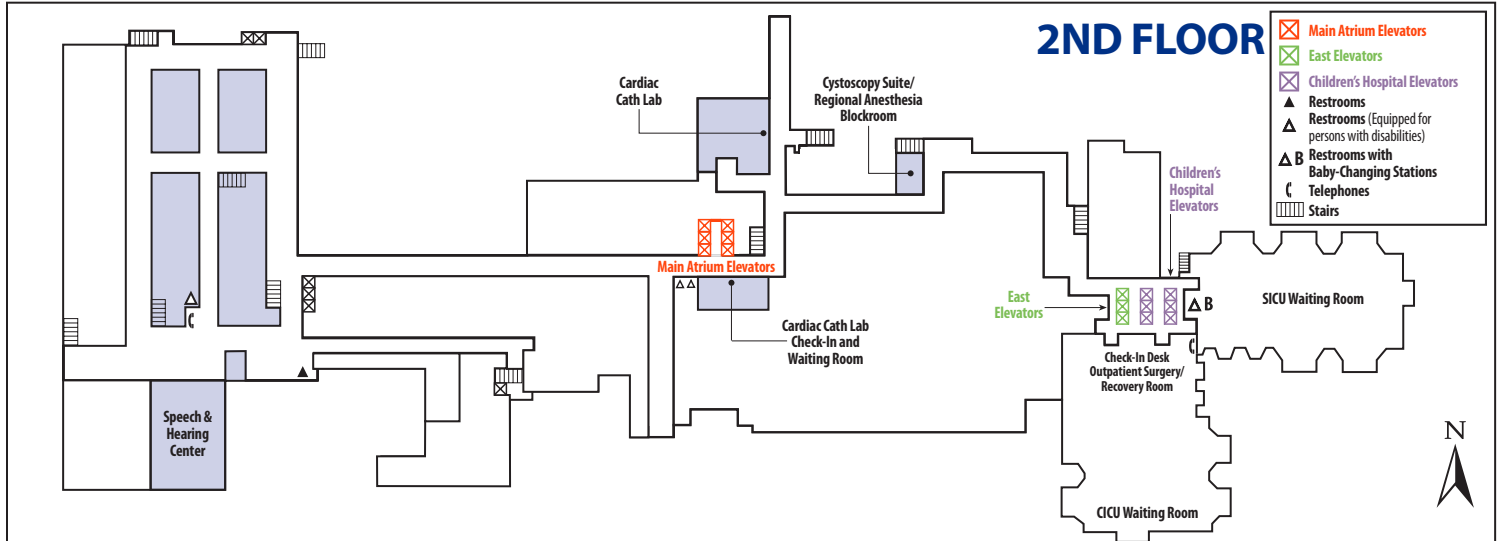
## NOTE:

Main Atrium Elevators do not go to the floors 8, 9, 10 and 11.

Please use the East Elevators for floor 11.

Please use the Children's Hospital Elevators for the 10th floor.

# UF HEALTH SHANDS HOSPITAL



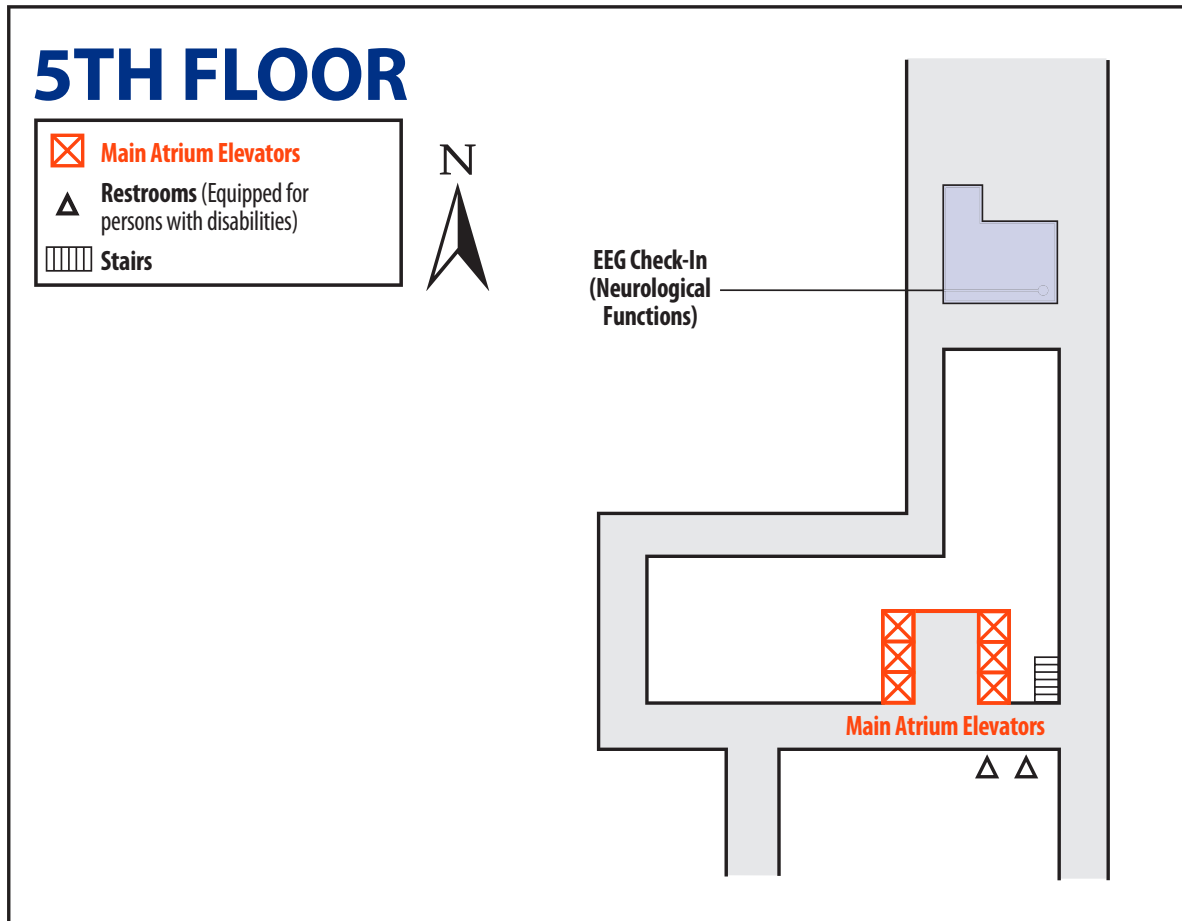
## NOTE:

*Main Atrium Elevators do not go to the floors 8, 9, 10 and 11.*

**Please use the East Elevators for floor 11.**

**Please use the Children's Hospital Elevators for the 10th floor.**

# UF HEALTH SHANDS HOSPITAL



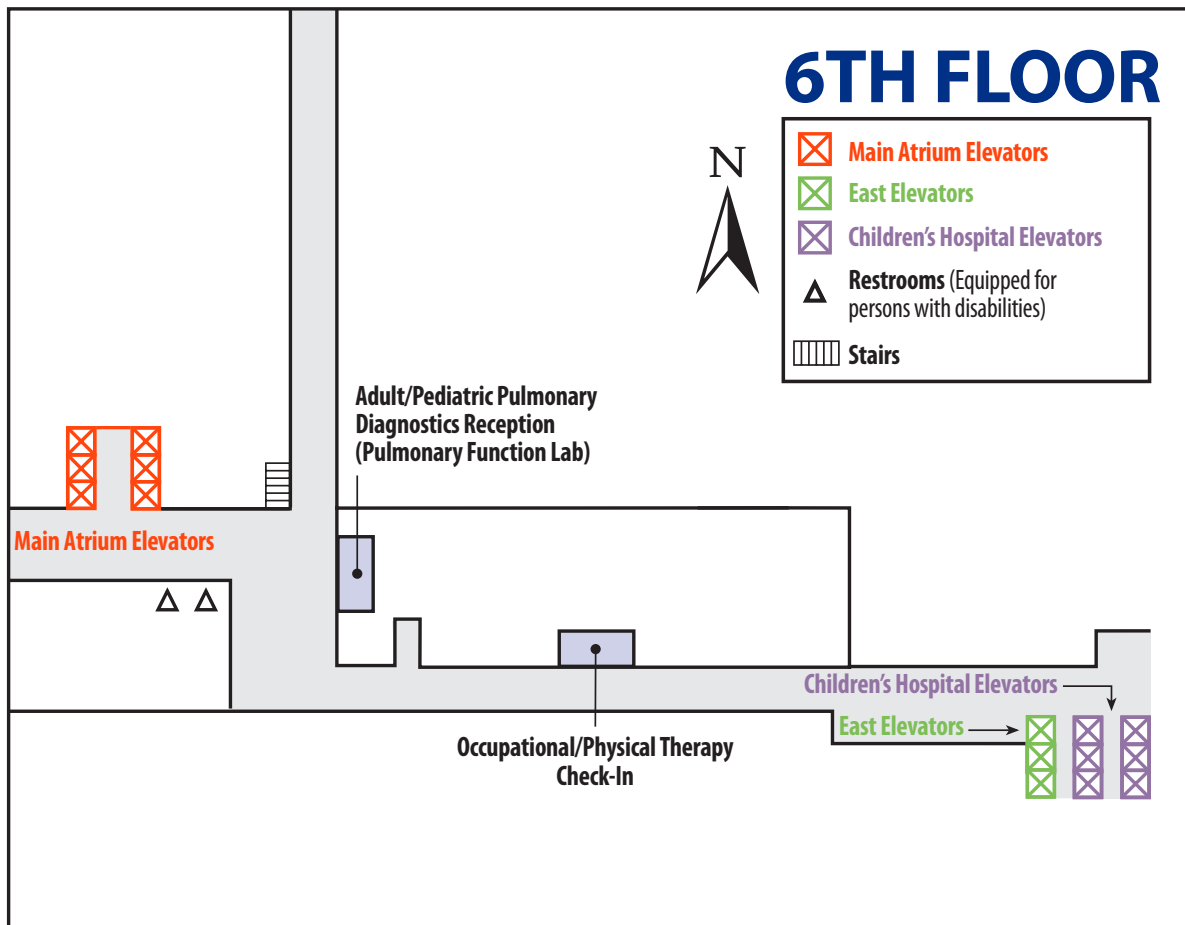
## NOTE:

*Main Atrium Elevators do not go to the floors 8, 9, 10 and 11.*

**Please use the East Elevators for floor 11.**

**Please use the Children's Hospital Elevators for the 10th floor.**

# UF HEALTH SHANDS HOSPITAL



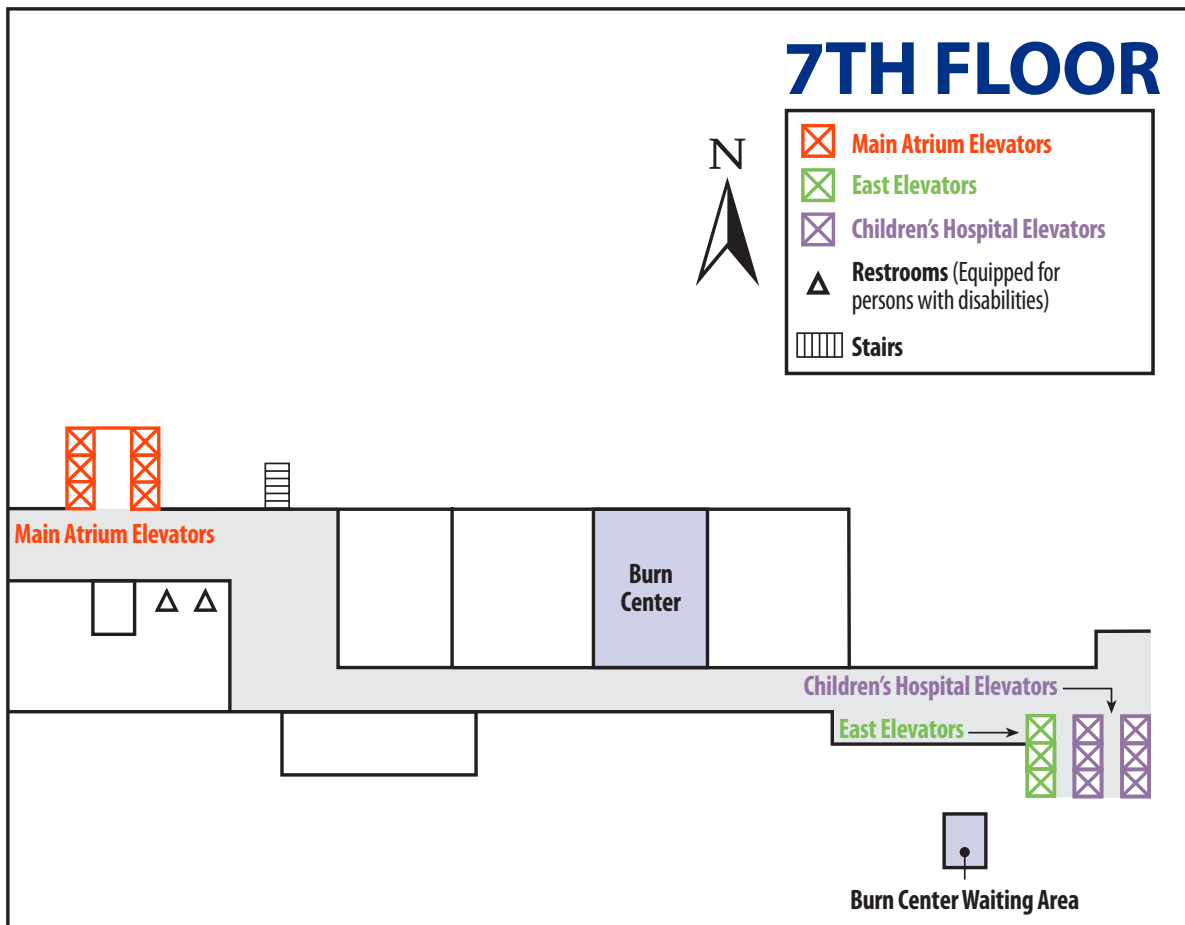
## NOTE:

*Main Atrium Elevators do not go to the floors 8, 9, 10 and 11.*

**Please use the East Elevators for floor 11.**

**Please use the Children's Hospital Elevators for the 10th floor.**

# UF HEALTH SHANDS HOSPITAL



## NOTE:

*Main Atrium Elevators do not go to the floors 8, 9, 10 and 11.*

**Please use the East Elevators for floor 11.**

**Please use the Children's Hospital Elevators for the 10th floor.**